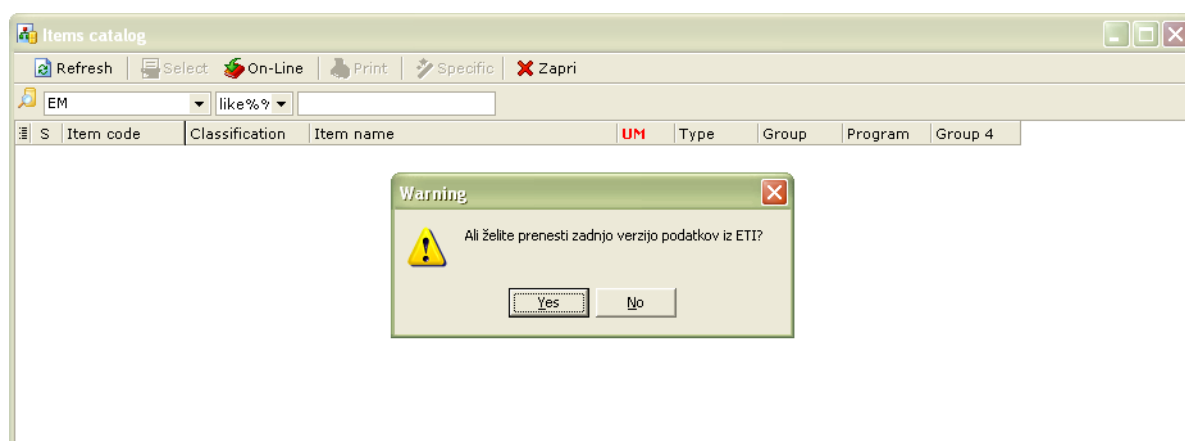


Printing labels ETI – user manual

1. In the main window click on »**Items**«. It opens window with the items.
 - **hint:** if you know the article number and his real name, it can be entered directly into the empty box and continue with the step »**6**«



2. After the first start of the program click the button »**On-line**« in the bottom of the window and follow the instructions to download the latest database from the server ETI (action is repeated in case that the desired code is not present in the codebook)

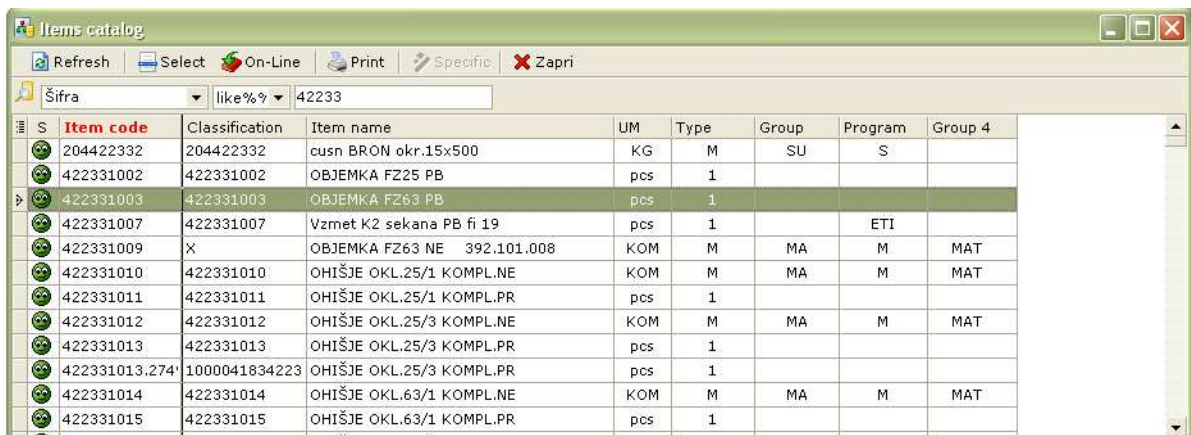


Printing labels ETI – user manual

- After successful transmission in the left text box change the default selection of »EM« in »Šifra - code«, in the right input box enter partial or full ETI code and click the button »Refresh«



- After clicking on »Refresh«, desired code is displayed in the main window. Click on desired code to signify and then »Select«



Printing labels ETI – user manual

- By clicking the button »**Select**«, program returns back to first window. In the first window we fill other required fields. (Supplier, Pur. order, Quantity, S/N (Batch))

Printing labels ETI d. d.

Items Print About Close English Save

Supplier ETI Elb Bahon

Item code 422331003 OBJEMKA FZ63 PB

Pur. order 12345

Quantity 10000

S/N(Batch) 1234

1.0 R0 Build 20

- When we have completed all the fields click on the button »**Tiskaj - print**« and in the window, that opens, select one of the options of printing labels 2 (never print etiketa1 –label 1), then click the button »**Tiskaj - print**«

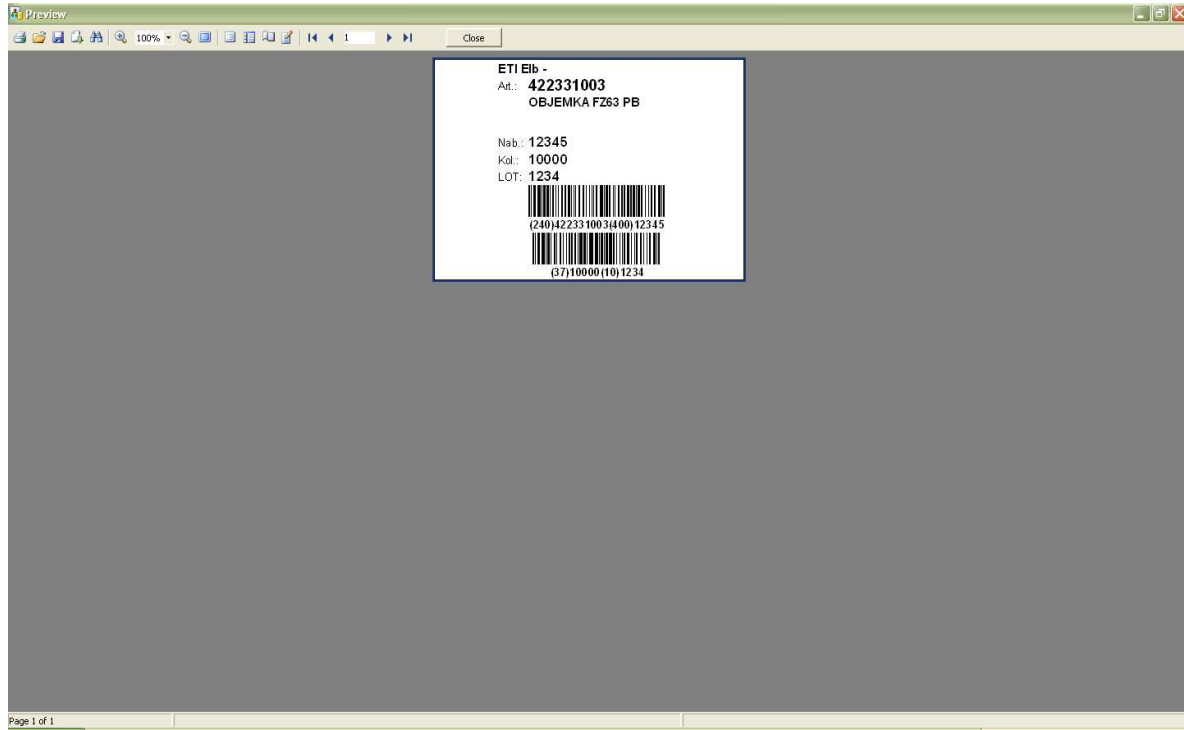
Izpisi

Osveži Akcije Izvozi Tiskaj Zapri

Ime izpisa	Izdelal	Datum spr.	OK	S	Vsi	WWW	Št. kopij
Etiketa 1		10.10.2013 13:13:32	<input checked="" type="checkbox"/>		<input checked="" type="checkbox"/>	<input type="checkbox"/>	1
Etiketa 1 - A4		10.10.2013 13:18:03	<input checked="" type="checkbox"/>		<input checked="" type="checkbox"/>	<input type="checkbox"/>	1
Etiketa 2		10.10.2013 13:25:02	<input checked="" type="checkbox"/>		<input checked="" type="checkbox"/>	<input type="checkbox"/>	1
Etiketa 2 - A4		10.10.2013 13:29:46	<input checked="" type="checkbox"/>		<input checked="" type="checkbox"/>	<input type="checkbox"/>	1
Etiketa 2 - A4 70x67.7 (Zweckform 3661)		10.10.2013 13:31:26	<input checked="" type="checkbox"/>		<input checked="" type="checkbox"/>	<input type="checkbox"/>	1

Printing labels ETI – user manual

7. It opens a window, which offers a variety of options. We choose the leftmost icon (**Print**) and a copy of label is sent to printer.



In case of problems, contact the author of the program.

